

**HLA BROCHURE 2024**

**ENTER TO  
LEARN  
LEAVE TO  
ACHIEVE**



**A NEW LANGUAGE A NEW LIFE**



**SCAN ME**  
FOR MORE INFOR



[www.hla.asia](http://www.hla.asia)



Camino Vicinal Road, TabokTulay,  
Cotcot, Liloan Cebu, Philippines



(+63) 977 755 7559  
(+63) 32 429 1237

# TABLE OF CONTENT

<b>1</b>	<b>INTRODUCTION - GOALS - PROSPECTS</b>	<b>1</b>
<b>2</b>	<b>WHY DID HLA CHOOSE THE PHILIPPINES?</b>	<b>2 - 3</b>
<b>3</b>	<b>WHY SHOULD YOU CHOOSE TO STUDY ENGLISH IN HLA?</b>	<b>4 - 5</b>
<b>4</b>	<b>HLA ENGLISH COURSES</b>	
	GENERAL ENGLISH	<b>6</b>
	LIGHT GENERAL ENGLISH	<b>7</b>
	BUSINESS ENGLISH	<b>8</b>
	MEDICAL ENGLISH	<b>9</b>
	AVIATION ENGLISH	<b>10</b>
	IT ENGLISH	<b>11</b>
	POLICE ENGLISH	<b>12</b>
	FAMILY & JUNIOR COURE	<b>13</b>
	TOEIC COURSE	<b>14</b>
	IELTS COURSE	<b>15</b>
	ENGLISH WINTER CAMP	<b>16</b>
	ENGLISH SUMMER CAMP	<b>17</b>
<b>5</b>	<b>HLA TUITION FEES TABLE</b>	<b>18 - 19</b>
<b>6</b>	<b>SERVICES &amp; UTILITIES</b>	<b>20 - 21</b>
<b>7</b>	<b>IMPORTANT CONSIDERATIONS</b>	<b>22 - 23</b>
	<b>HLA SCHOOL RULES</b>	<b>24 - 25</b>
<b>8</b>	<b>HLA DORMITORY</b>	<b>26 - 31</b>
<b>9</b>	<b>HLA FACILITIES</b>	<b>32 - 36</b>
<b>10</b>	<b>HLA STUDENT</b>	<b>37 - 39</b>
<b>11</b>	<b>PHILIPPINES HOLIDAY 2024</b>	<b>40</b>
<b>12</b>	<b>HLA MAP</b>	<b>41</b>



# 01



## WELCOME TO HLA

---

*Happy Learning Academy has been invested and developed since 2022 and we will officially welcome international students from March 2023. We believe that our school can bring high quality courses and services to our future students.*

### HLA GOALS & PROSPECTS

Happy Learning Academy is the first English school in the Philippines that was built and developed by Vietnamese. Considering the fact that English is not the dominant language in Vietnam, many people find it difficult to learn this language in their home country, as there is no environment to practice. Therefore, HLA wishes to bring an effective English learning place suitable for students from non-native English-speaking countries, especially Vietnam, China, Taiwan, Mongolia, Russia, Oman,... In addition, learning English in the Philippines is also a setting to practice a communal lifestyle, be independent of family, and have more social relationships with international friends worldwide. It is also a good foundation for students who plan to study abroad or immigrate to other foreign countries.

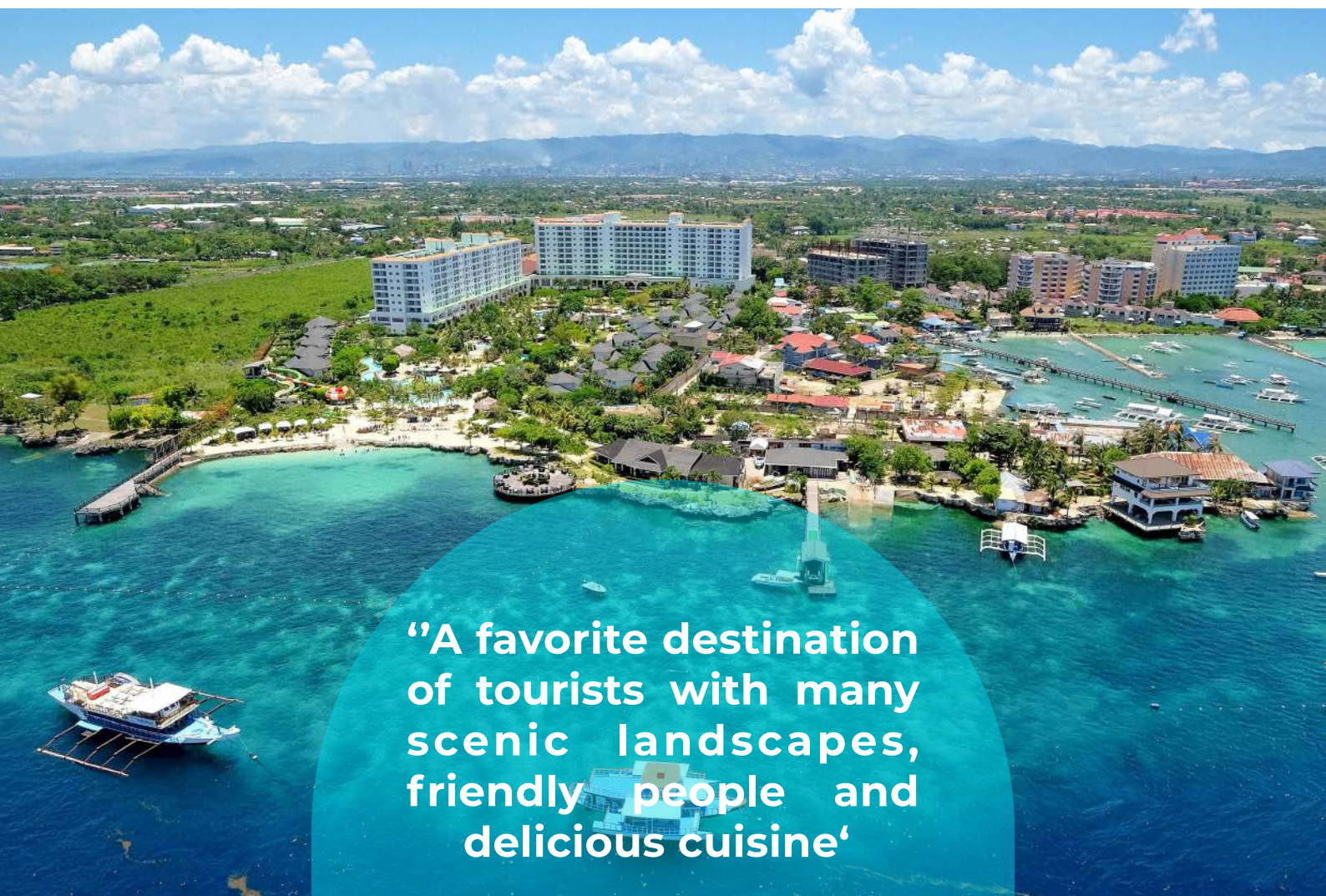


# 02

## Why did HLA CHOOSE THE PHILIPPINES?

This magnificent country with thousands of islands was formerly a colony of the United States; during American administration, English was incorporated into the educational curriculum, and this language is widely spoken throughout the country today. Although not a mother tongue, English has become the Philippines' second most common language at all educational levels. The Philippines is indeed a country that offers 1-to-1 classes at an affordable price; the tuition fee includes food, accommodation, laundry, and cleaning. As a result, international students can fully focus on learning English.

Furthermore, this is also a tourist favorite destination, with many scenic landscapes, friendly people, and delicious cuisine. These are also the main reasons this country has become an effective English language learning place for students from Japan, Korea, and China, such as Taiwan, Vietnam, Thailand, Arab, and Mongolian. With manMongoliaf working experience with a big English school in the Philippines and expertise in this field, HLA was founded to create a new system of English teaching and learning that adheres to global standards while implementing changes that are more friendly to Vietnamese and students from all over the world.



**“A favorite destination of tourists with many scenic landscapes, friendly people and delicious cuisine”**



# 02

## Why did HLA CHOOSE THE PHILIPPINES?

### INFRASTRUCTURE

HLA is located in Liloan (16km from the center of Cebu and 9km from the airport). HLA campus is 11,800 square meters, surrounded by a large green space with trees and flowers. It is an ideal location for students to concentrate on their studies without being distracted by the city's dust and noise. Also, it has a cool and pleasant atmosphere when HLA is less than 800m from the beach. Students can go swimming or have a walk by the seashore after their classes.

School facilities include 01 standard court for basketball, volleyball, and badminton..., 02 swimming pools, 01 recreation room, 01 musical instrument room, 01 leisure room, an outdoor gym area, a mini-golf practice area, H-Cafe, H-Mart, jogging, and cycling track. Thus, students can live comfortably and pleasantly while staying inside the HLA campus.



### EDUCATION

HLA believes in the Cambridge training program, acknowledged by the most well-known academic institutions and is a top-rated education system. Cambridge English can provide a straightforward and logical pathway for future HLA students.

HLA uses Cambridge's curriculum in learning and teaching methods. In order to be able to synchronize with the curriculum, our teachers are professionally trained by Cambridge. In addition, HLA teachers regularly participate in testing and evaluation according to Cambridge standards to maintain teaching quality.

# 03

## Why you choose to STUDY ENGLISH IN HLA?

*Studying English in the Philippines offers a unique and immersive experience in an English-speaking environment. It is an ideal destination for language learners with highly qualified teachers, a wide range of language programs, and a vibrant cultural setting. Beyond the classroom, students can explore the rich history, diverse culture, and natural beauty of the Philippines. Whether for academic, professional, or personal growth, studying English at HLA in the Philippines promises students a transformative and enjoyable journey. Happy Learning Academy offers the reasons why students should take HLA English Courses.*



01

HLA was established right after COVID-19, when it was a safe time for students to experience studying English in a foreign country. HLA affirms that the school has all the facilities, teachers, and curriculum standards that exceed the Ministry of Industry and Trade requirements, the Department of Immigration, the Department of Education of Cebu, and the Philippines. HLA is licensed for full and qualified SSP and TESDA certificates to ensure that it is allowed to welcome international students from many countries worldwide.

HLA is filled with youth, passion, and eager effort. Following the path of various English academies in the Philippines, HLA always aims to improve and develop its training program to become better day by day.



02

HLA school managing board and staff are diligent people with more than ten years of experience in this field. Understanding the diversity and cultural variations across Asian nations such as Vietnam, China, Taiwan, Mongolia, and Russia,... HLA is trying its best to create an ideal learning environment for our international students without any cultural conflicts.



03





04

HLA teachers are carefully chosen based on the admission exams, the results of the international English proficiency tests, and their university major. HLA, in particular, considers the teachers' English skills and values their teaching experiences and methodologies.

Understanding the culinary differences between countries, HLA provides a daily buffet so that students can have various choices and enjoy the taste of their classmates' traditional dishes. In addition, HLA also has an outdoor self-cooking area. On the weekends, students can freely cook hot pot or barbecue,... in their own style.



05



06

The total area of the HLA campus is up to 11,800m<sup>2</sup> surrounding the mountains and the beach, but it is only used for less than 200 students, so the space is completely airy and not too humid like the weather in the Philippines, as people think. Our infrastructure includes a basketball court, swimming pool, cycling belt, jogging track, mini-golf, convenience store, teahouse, sports area, and prayer room. HLA will continue adding more in the future to make HLA students comfortable studying here.

HLA tuition fees include accommodation and meals, much lower than other schools. Besides, Filipinos are very hospitable and friendly, so students will only take a little time to adapt. At this moment, people from every country can come to the Philippines to study with a visa-free program (except for China). As a result, it is really easy for international students to join HLA.



07

# 04

# HLA ENGLISH COURSES



*General English Course gives the learner a solid foundation of the English language aspects such as speaking, listening, reading, and writing skills with a particular focus on using English naturally, as well as developing grammar and vocabulary.*

## 1:1 CLASS

4 classes (50 mins per class)

## GROUP CLASS

4 classes (50 mins per class)

## OPTIONAL CLASS

1 Essay Writing or Music Class

## LEARNING GOALS

- To convey natural responses in basic English conversations with accuracy and fluency.
- To enhance the ability to express views and opinions with confidence.
- To improve pronunciation and intonation through practice and immersion in and out of class, as this is an international school where people from different nationalities learn and improve together
- To develop English vocabulary and grammatically correct sentence structure.
- To demonstrate a wide range of expressions to cope with future study or with life in the workplace.

## RECOMMENDED FOR

- A 4-week general English study helps students confidently improve comprehensive English skills.
- Students from non-English speaking countries who want to obtain good communication skills and use them effectively in any given situation.
- People who work internationally are about to enroll in international colleges and universities, often travel abroad, and value international experience.
- Non-English speakers who want to start learning English or continue their deeper understanding of the English Language.

HLA LEVEL	CEFR LEVEL	DESCRIPTION
10	C2	Proficient
9	C1	Advanced
8	B2+	Upper Intermediate
7	B2	Upper Intermediate
6	B1+	Intermediate
5	B1	Intermediate
4	A2+	Pre-Intermediate
3	A2	Elementary
2	A1+	Elementary
1	A1	High Beginner
0.5	PA+	Middle Beginner
0	PA	Low Beginner

PERIOD	TIME	CLASS TYPE	SUBJECT
	7:45 - 8:05	Vocabulary Test	
1st	8:10 - 9:00	One to One	Speaking
2nd	9:05 - 9:55	Group Class	General Skills
3rd	10:05 - 10:55	One to One	Writing
4th	11:00 - 11:50	Group Class	Listening
	11:50 - 13:00	Lunch time	
5th	13:00 - 13:50	One to One	Reading
6th	13:55 - 14:45	Group Class	Pronunciation
7th	14:50 - 15:40	One to One	General Skills
8th	15:45 - 16:35	Group Class	Grammar
9th	16:40 - 17:30	Optional Class	Essay Writing/ Music Class



# 04

# HLA ENGLISH COURSES



*Light General English course aims to enable students to develop fluency, accuracy, and confidence in listening, speaking, reading, and writing in English in everyday situations. This course is designed for students to have equal opportunities for both leisure and study without pressure.*

## 1:1 CLASS

3 classes (50 mins per class)

## GROUP CLASS

3 classes (50 mins per class)

## OPTIONAL CLASS

1 Essay Writing or Music Class

## LEARNING GOALS

- To immerse in an English-speaking environment that promotes social and practical communication skills.
- To improve English language skills while fully enjoying the benefit of being in a fun and engaging community.
- To be confident in using the English language as part of communication.

## RECOMMENDED FOR

- A 4-week light course that opens opportunities for enrollees to improve practical English communication.
- Non-English speakers who enjoy learning English while having ample time to explore the Philippines for leisure.
- Learners from Asian countries who want to acquire and improve their English language skills.
- Students from different countries seek to study English to a certain degree without the pressure of studying full-time.

HLA LEVEL	CEFR LEVEL	DESCRIPTION
10	C2	Proficient
9	C1	Advanced
8	B2+	Upper Intermediate
7	B2	Upper Intermediate
6	B1+	Intermediate
5	B1	Intermediate
4	A2+	Pre-Intermediate
3	A2	Elementary
2	A1+	Elementary
1	A1	High Beginner
0.5	PA+	Middle Beginner
0	PA	Low Beginner

PERIOD	TIME	CLASS TYPE	SUBJECT
	7:45 - 8:05	Vocabulary Test	
1st	8:10 - 9:00	One to One	Speaking
2nd	9:05 - 9:55	One to One	Writing
3rd	10:05 - 10:55	Group Class	Listening
4th	11:00 - 11:50	Free Period	
	11:50 - 13:00	Lunch time	
5th	13:00 - 13:50	Free Period	
6th	13:55 - 14:45	Group Class	Pronunciation
7th	14:50 - 15:40	One to One	Reading
8th	15:45 - 16:35	Group Class	Grammar
9th	16:40 - 17:30	Optional Class	Essay Writing/ Music Class

# 04

# HLA ENGLISH COURSES



*Business English Course in HLA is designed to meet specific, individual, and professional needs as a category of English communication that includes the language skills used at work. These language skills include the English communication used in presentations, negotiations, meetings, small talk, socializing, correspondence, report writing, etc.*

## 1:1 CLASS

4 classes (50 mins per class)

## GROUP CLASS

4 classes (50 mins per class)

## OPTIONAL CLASS

1 Essay Writing or Music Class

## LEARNING GOALS

- To develop and enhance students' confidence to take control of any communication opportunity and proactively convey their topic or standpoint.
- To be capable of using English to handle tasks such as drafting contracts, writing emails for customers and partners, negotiating contracts.
- To cultivate natural and fluent English speaking abilities, such as the ability to convey emotions as well as behavior in line with various cultures through tone or body language.

## RECOMMENDED FOR

- An 8-week extensive course to help students grow into business professionals acquiring essential English skills necessary for job applications or the workplace.
- Business professionals and aspiring business people who seek to improve and expand their business language competency in English both oral and written communication.

### COMMON EUROPEAN FRAMEWORK OF REFERENCE (CEFR)

HLA LEVEL	CEFR LV	BEC (Cambridge English Scale Score)
Basic User	A1	Advised to join General English
Basic User	A2	
Independent	B1	140-159 (Preliminary)
Independent	B2	160-179 (Vantage)
Proficient	C1	180-199 (Higher)
Proficient	C2	200 up

- Classes will be available for all students with a scale score of 140 on the Entrance Test.
- Failure to reach a scale score of 140 is advised to study a General English Course or to have group classes together with General English Course students.

PERIOD	TIME	CLASS TYPE	SUBJECT
	7:45 - 8:05	Vocabulary Test	
1st	8:10 - 9:00	One to One	Business Focus
2nd	9:05 - 9:55	Group Class	General Skills
3rd	10:05 - 10:55	One to One	Business Presentation
4th	11:00 - 11:50	Group Class	Listening
	11:50 - 13:00	Lunch time	
5th	13:00 - 13:50	One to One	General Business
6th	13:55 - 14:45	Group Class	Pronunciation
7th	14:50 - 15:40	One to One	Speaking
8th	15:45 - 16:35	Group Class	Business Vocabulary
9th	16:40 - 17:30	Optional Class	Essay Writing/ Music Class



# 04

# HLA ENGLISH COURSES



*Medical English Course in HLA is for non-native English medical students and medical professionals who seek to learn English in relation to their chosen careers where they learn terminologies needed in the medical field. Moreover, mastering the medical English vocabulary allows students to easily apply for scholarships to study medicine or be admitted to prominent medical institutions.*

## 1:1 CLASS

4 classes (50 mins per class)

## GROUP CLASS

4 classes (50 mins per class)

## OPTIONAL CLASS

1 Essay Writing or Music Class

## LEARNING GOALS

- To know specific medical terms when writing reports in English.
- To demonstrate proficiency in English in the medical field.
- To master an array of technical terminologies in healthcare that will help students attain greater achievement in their chosen careers.
- To comprehend healthcare seminars, workshops, and conferences that use English as a medium of communication.
- To interact confidently with fellow healthcare professionals in an international environment.

## RECOMMENDED FOR

- An 8-week in-depth study of the course where medical students learn English utilized in the healthcare field.
- Non-native English aspiring medical students or medical professionals who seek to enrich their vocabulary in Medical English and confidently use the language in actual settings.
- Non-native English healthcare professionals and aspirants who strive to master the English language as part of communication and importance in their field of study.

HLA LEVEL	CEFR LV	OET GRADE	OET SCORE
Basic User	A1		
Basic User	A2	E	0 - 90
Independent	B1	D	100 - 190
Independent	B2	C	200 - 290
Proficient	C1	C+	300 - 340
Proficient	C1+	B	350 - 440
Proficient	C2	A	450 - 500

- Classes will be available for all students with an OET score of 100 on the Entrance Test.
- Failure to reach an OET score of 100 is advised to study a General English Course or to have group classes together with General English Course students.

PERIOD	TIME	CLASS TYPE	SUBJECT
	7:45 - 8:05	Vocabulary Test	
1st	8:10 - 9:00	One to One	Career Focus
2nd	9:05 - 9:55	Group Class	General Skills
3rd	10:05 - 10:55	One to One	OET Writing
4th	11:00 - 11:50	Group Class	OET Listening
	11:50 - 13:00	Lunch time	
5th	13:00 - 13:50	One to One	OET Reading
6th	13:55 - 14:45	Group Class	Pronunciation
7th	14:50 - 15:40	One to One	OET Speaking
8th	15:45 - 16:35	Group Class	Vocabulary
9th	16:40 - 17:30	Optional Class	Essay Writing/ Music Class

# 04

# HLA ENGLISH COURSES



HLA offers any aviation professionals or cabin crew a chance to improve their skills in ICAO phraseology, ATC terminology, and navigation terms, while also meeting the ICAO language proficiency standards required for aviation personnel. With our experienced tutors, we'll help you become confident in communicating with air traffic control, interpreting aircraft performance terms, and understanding aviation instruments and systems.

## 1:1 CLASS

4 classes (50 mins per class)

## GROUP CLASS

4 classes (50 mins per class)

## OPTIONAL CLASS

1 Essay Writing or Music Class

## LEARNING GOALS

- To communicate clearly, directly, and with authority but also politely, even when dealing with different situations as cabin crew or pilots in both oral and written communication.
- To avoid confusion over numbers, use of non-standard phraseology, and misunderstandings over technical vocabulary and jargon & knowledgeable on the terms related to aircraft performance, navigation, weather, and various aviation systems and instruments.

## RECOMMENDED FOR

- An 8-week thorough program that enhances students' English language proficiency as a vital component in aviation.
- Aspiring aviation students or professionals who understand the importance of effective communication in this industry.
- Students who are interested to learn about aviation.

HLA LEVEL	CEFR LEVEL	DESCRIPTION
10	C2	Proficient
9	C1	Advanced
8	B2+	Upper Intermediate
7	B2	Upper Intermediate
6	B1+	Intermediate
5	B1	Intermediate
4	A2+	Pre-Intermediate
3	A2	Elementary
2	A1+	Elementary
1	A1	High Beginner
0.5	PA+	Middle Beginner
0	PA	Low Beginner

PERIOD	TIME	CLASS TYPE	SUBJECT
	7:45 - 8:05	Vocabulary Test	
1st	8:10 - 9:00	One to One	Career Focus
2nd	9:05 - 9:55	Group Class	General Skills
3rd	10:05 - 10:55	One to One	Writing
4th	11:00 - 11:50	Group Class	Listening
	11:50 - 13:00	Lunch time	
5th	13:00 - 13:50	One to One	Reading
6th	13:55 - 14:45	Group Class	Pronunciation
7th	14:50 - 15:40	One to One	Speaking
8th	15:45 - 16:35	Group Class	Vocabulary
9th	16:40 - 17:30	Optional Class	Essay Writing/ Music Class

- Classes will be available for all students with B1 level on the Entrance Test.
- Failure to reach B1 level is advised to study a General English Course or to have group classes together with General English Course student.



# 04

# HLA ENGLISH COURSES



With the advancement of the IT industry, innovations are always updated. HLA's IT English Course focuses on building excellent English language proficiency in Information Technology (IT), Computer Science (CS), or any IT-related field. This course will further enhance one's ability to understand oral and written English in the IT field.

## 1:1 CLASS

4 classes (50 mins per class)

## GROUP CLASS

4 classes (50 mins per class)

## OPTIONAL CLASS

1 Essay Writing or Music Class

## LEARNING GOALS

- To learn English efficiently and achieve the industry's requirements.
- To enhance English proficiency not only in communication but also in this field of study.
- To increase vocabulary power in information technology, or in any IT-related profession.

## RECOMMENDED FOR

- An 8-week in-depth study program that enhances students' language proficiency in English as a principal component in Information Technology, Computer Science, or Programming.
- Aspiring IT students or professionals who understand the importance of effective communication in this industry.
- Students who are interested in learning about English used in the IT field of study.

HLA LEVEL	CEFR LEVEL	DESCRIPTION
10	C2	Proficient
9	C1	Advanced
8	B2+	Upper Intermediate
7	B2	Upper Intermediate
6	B1+	Intermediate
5	B1	Intermediate
4	A2+	Pre-Intermediate
3	A2	Elementary
2	A1+	Elementary
1	A1	High Beginner
0.5	PA+	Middle Beginner
0	PA	Low Beginner

PERIOD	TIME	CLASS TYPE	SUBJECT
	7:45 - 8:05	Vocabulary Test	
1st	8:10 - 9:00	One to One	Career Focus
2nd	9:05 - 9:55	Group Class	General Skills
3rd	10:05 - 10:55	One to One	Writing
4th	11:00 - 11:50	Group Class	Listening
	11:50 - 13:00	Lunch time	
5th	13:00 - 13:50	One to One	Reading
6th	13:55 - 14:45	Group Class	Pronunciation
7th	14:50 - 15:40	One to One	Speaking
8th	15:45 - 16:35	Group Class	Vocabulary
9th	16:40 - 17:30	Optional Class	Essay Writing/ Music Class

- Classes will be available for all students with B1 level on the Entrance Test.
- Failure to reach B1 level is advised to study a General English Course or to have group classes together with General English Course student.

# 04

# HLA ENGLISH COURSES



*Police English Course is designed to equip law enforcement professionals with the linguistic tools necessary to navigate the complexities of their roles, ensuring effective communication in a variety of policing scenarios.*

*4 weeks and up in-depth study program that enhances students' language proficiency in English as a principal component.*

## 1:1 CLASS

4 classes (50 mins per class)

## GROUP CLASS

4 classes (50 mins per class)

## OPTIONAL CLASS

1 Essay Writing or Music Class

## LEARNING GOALS

- To develop clear and precise verbal and written communication skills essential for conveying information accurately in diverse policing scenarios.
- To equip detectives and investigators with the language skills necessary for conducting interviews, interrogations, and documenting findings during criminal investigations.
- To promote positive interactions with the community.

## RECOMMENDED FOR

- Law enforcement professionals who want to enhance their English language proficiency . For better results, an 8-week course is highly recommended.
- Aspiring police and professional police for whom English is not their first language and who seek to improve their language skills to perform their law enforcement duties more effectively.
- Non-English speakers undergoing initial training or entering the law enforcement field.

HLA LEVEL	CEFR LEVEL	DESCRIPTION
10	C2	Proficient
9	C1	Advanced
8	B2+	Upper Intermediate
7	B2	Upper Intermediate
6	B1+	Intermediate
5	B1	Intermediate
4	A2+	Pre-Intermediate
3	A2	Elementary
2	A1+	Elementary
1	A1	High Beginner
0.5	PA+	Middle Beginner
0	PA	Low Beginner

PERIOD	TIME	CLASS TYPE	SUBJECT
	7:45 - 8:05	Vocabulary Test	
1st	8:10 - 9:00	One to One	Career Focus
2nd	9:05 - 9:55	Group Class	General Skills
3rd	10:05 - 10:55	One to One	Writing
4th	11:00 - 11:50	Group Class	Listening
	11:50 - 13:00	Lunch time	
5th	13:00 - 13:50	One to One	Reading
6th	13:55 - 14:45	Group Class	Pronunciation
7th	14:50 - 15:40	One to One	Speaking
8th	15:45 - 16:35	Group Class	Vocabulary
9th	16:40 - 17:30	Optional Class	Essay Writing/ Music Class

- Classes will be available for all students with B1 level on the Entrance Test.
- Failure to reach B1 level is advised to study a General English Course or to have group classes together with General English Course student.



# 04

# HLA ENGLISH COURSES



*Family & Junior Course is designed for parents and children aged 5 to 16 come to study in a non peak season. The course is a fantastic opportunity for parents and their children to bond, learn a new skill, make new friends from all over the world and visit a country that they have possibly never been to before.*

## 1:1 CLASS

3 classes (50 mins per class)

## GROUP CLASS

3 classes (50 mins per class)

## OPTIONAL CLASS

1 Essay Writing or Music Class

## LEARNING GOALS

- To satisfy student's curiosity in English as a second language.
- To draw out maximum potential of the students in four macro-skills and usage of English in order to confidently use the language in both oral and written communication.

## RECOMMENDED FOR

- A minimum of 1 week English study program for both the parents and their children to learn together and be able to grasp the complexity of the English language.

- Children who have breaks between semesters, especially those who attend international schools to improve their English skills and to experience an independent life.

- Children accompanied by their parents, want to feel secure and comfortable to study and have fun where they can improve their English and keep a lot of memories with their children.

Parents get in touch and choose suitable courses for their children not only in summer but all throughout the year as well.

- Spend more time traveling to Cebu after classes.

HLA LEVEL	CEFR LEVEL	DESCRIPTION
10	C2	Proficient
9	C1	Advanced
8	B2+	Upper Intermediate
7	B2	Upper Intermediate
6	B1+	Intermediate
5	B1	Intermediate
4	A2+	Pre-Intermediate
3	A2	Elementary
2	A1+	Elementary
1	A1	High Beginner
0.5	PA+	Middle Beginner
0	PA	Low Beginner

PERIOD	TIME	CLASS TYPE	SUBJECT
	7:45 - 8:05	Vocabulary Test	
1st	8:10 - 9:00	One to One	Speaking
2nd	9:05 - 9:55	One to One	Writing
3rd	10:05 - 10:55	Group Class	Listening
4th	11:00 - 11:50	Free Period	
	11:50 - 13:00	Lunch time	
5th	13:00 - 13:50	Free Period	
6th	13:55 - 14:45	Group Class	Pronunciation
7th	14:50 - 15:40	One to One	Reading
8th	15:45 - 16:35	Group Class	General Skills
9th	16:40 - 17:30	Optional Class	Essay Writing/ Music Class

# 04

# HLA ENGLISH COURSES



TOEIC Course is designed to make students become familiar with the TOEIC format and achieve their desired score through training, classes, and an array of sample tests. Students are taught common vocabulary and sentence patterns used in the official TOEIC examinations. Additionally, students are also equipped with test-taking strategies for each language skill, especially on time management while taking the test.

## 1:1 CLASS

4 classes (50 mins per class)

## GROUP CLASS

4 classes (50 mins per class)

## OPTIONAL CLASS

1 Essay Writing or Music Class

## LEARNING GOALS

- To master eloquence and foster confidence in English both oral and written communication.
- To develop test-taking strategies that aid in achieving the student's target score.
- To give students a chance to systematically practice the skills to be successful in the TOEIC test and improve the overall knowledge not only of four macro skills but also the usage of English.

## RECOMMENDED FOR

- Students who want to enter universities or work internationally that require a specific TOEIC score.
- Job seekers who are targeting positions in high-ranking companies, as well as workers who aim for a job promotion.
- Students who intend to master their English language abilities in a professional environment.

HLA LEVEL	CEFR LEVEL	DESCRIPTION
10	C2	
9	C1	945 - 900
8	B2+	785 - 935
7	B2	
6	B1+	550 - 775
5	B1	
4	A2+	225 - 540
3	A2	
2	A1+	120 - 215 Advised to study General English Course
1	A1	
0.5	PA+	Advised to study General English Course
0	PA	

PERIOD	TIME	CLASS TYPE	SUBJECT
	7:45 - 8:05	Vocabulary Test	
1st	8:10 - 9:00	Group Class	TOEIC Listening
2nd	9:05 - 9:55	One to One	Listening Analysis
3rd	10:05 - 10:55	One to One	TOEIC Reading
4th	11:00 - 11:50	One to One	Reading Analysis
	11:50 - 13:00	Lunch time	
5th	13:00 - 13:50	Group Class	TOEIC Vocabulary
6th	13:55 - 14:45	Group Class	Pronunciation
7th	14:50 - 15:40	Group Class	General Skills
8th	15:45 - 16:35	One to One	TOEIC Grammar
9th	16:40 - 17:30	Optional Class	Essay Writing/ Music Class

- Failure to reach 400 will not be able to study the TOEIC course but can be enrolled in the TOEIC preparatory course which has 04 one-to-one TOEIC classes and 04 General English group classes.
- When students get 400 scaled scores for two consecutive Mock Tests, they will automatically join TOEIC group classes.



# 04

# HLA ENGLISH COURSES



International English Language Testing System – is a certificate necessary for people planning to study abroad at the undergraduate and postgraduate levels in an English-only program or to settle abroad. IELTS preparation course at HLA with equal understanding of all four IELTS exam skills: listening, speaking, reading, and writing. Furthermore, the course provides students with grammar exercises and vocabulary expansion, which are co-applied in daily conversation so that students may use English confidently and fluently in life, study, and work.

## 1:1 CLASS

5 classes (50 mins per class)

## GROUP CLASS

3 classes (50 mins per class)

## OPTIONAL CLASS

1 Essay Writing or Music Class

## LEARNING GOALS

- To ensure students have visible improvement in IELTS.
- To enhance test-taking abilities, especially on time management.
- To learn the fundamental strategies for all macro skills to achieve the target band score in IELTS.

## RECOMMENDED FOR

- A 12-week comprehensive study program to achieve students' target band score.
- Non-native English speakers who want to polish their IELTS test
- Learners from different parts of Asia who wish to study or work abroad.

## COMMON EUROPEAN FRAMEWORK OF REFERENCE (CEFR)

HLA LEVEL	CEFR LV	IELTS BAND SCORE
Basic User	A1	
Basic User	A2	3 - 3.5
Independent	B1	4.0 - 4.5 - 5.0
Independent	B2	5.5 - 6.0 - 6.5
Proficient	C1	7.0 - 7.5 - 8.0
Proficient	C2	8.5 - 9.0

PERIOD	TIME	CLASS TYPE	SUBJECT
	7:45 - 8:05	Vocabulary Test	
1st	8:10 - 9:00	One to One	IELTS Reading
2nd	9:05 - 9:55	Group Class	IELTS Listening
3rd	10:05 - 10:55	One to One	IELTS Speaking
4th	11:00 - 11:50	Group Class	General Skills
	11:50 - 13:00	Lunch time	
5th	13:00 - 13:50	One to One	IELTS Writing
6th	13:55 - 14:45	One to One	IELTS Grammar
7th	14:50 - 15:40	One to One	General Skills
8th	15:45 - 16:35	Group Class	IELTS Vocabulary
9th	16:40 - 17:30	Optional Class	Essay Writing/ Music Class

- Classes will be available for all students with a band score of 4.0 on the Entrance Test.
- Failure to reach a band score of 4.0 will not be able to study the REGULAR IELTS Course.
- If the student really wanted to pursue studying IELTS but failed to reach an average band score of 4, a Pre-IELTS course is available if the student gets at least an average band score of 3.5 where group classes are joined with the General English Course students.

# 04

# HLA ENGLISH COURSES

## WINTER CAMP

The Winter Camp program at HLA is usually held every winter, from December to January, with students from many countries, such as Mongolia, China, Taiwan, and Russia.

Happy Learning Academy was established with the goal of teaching English to students from different countries in Cebu, Philippines to study, exchange cultures and explore this beautiful island. A friendly, fun and comfortable environment has always been something that HLA aims for and maintains.

In the Winter Camp, HLA offers a short-term English learning program from 02 to 06 weeks, including fun and travel for children. Children will learn to live in a collective environment and adjust to varied cultures, lifestyles, and personalities. Through that, children can become more autonomous while simultaneously enjoying time with their families.

### 1<sup>st</sup> WEEK

SUN	MON	TUE	WED	THU	FRI	SAT
Arrival at School 	Entrance test/ Orientation 	Welcome Party 	1:1 Class 	Swimming Class 	Group Class 	Jpark/Solea Resort 

### 2<sup>nd</sup> WEEK

SUN	MON	TUE	WED	THU	FRI	SAT
Sport Competition 	1:1 Class 	Group Class 	Table Tennis 	Zumba Class 	Group Class 	Cebu Safari 

### 3<sup>rd</sup> WEEK

SUN	MON	TUE	WED	THU	FRI	SAT
Hygiene Check 	1:1 Class 	Group Class 	Music Class 	Sport Class 	Group Class 	Sinulog Festival 

### 4<sup>th</sup> WEEK

SUN	MON	TUE	WED	THU	FRI	SAT
Shopping 	Speech Training 	Group Class 	1:1 Class 	Spelling Bee 	Graduation Ceremony 	Go Home 



# 04

# HLA ENGLISH COURSES

## SUMMER CAMP

The Summer Camp program at HLA is usually held every summer from May to August with students from countries such as Vietnam, Mongolia, China, Taiwan, Omani, and Russia,...

HLA's mission at HLA Summer Camp is simple yet profound to create an environment where children aged 6 to 16 study English and thrive, build friendships, and experience the joys of summer camp in a safe and supportive setting. This course offers a minimum of 04 weeks.

It is an ideal destination for language learners with highly qualified teachers, a wide range of language programs, and a vibrant cultural setting. Beyond the classroom, students can explore the rich history, diverse culture, and natural beauty of the Philippines. Whether for academic, professional, or personal growth, studying English in the Philippines promises a transformative and enjoyable journey.

### 1<sup>st</sup> WEEK

SUN	MON	TUE	WED	THU	FRI	SAT
Arrival at School 	Entrance test/ Orientation 	Welcome Party 	1:1 Class 	Swimming Class 	Group Class 	Jpark/Solea Resort 

### 2<sup>nd</sup> WEEK

SUN	MON	TUE	WED	THU	FRI	SAT
Sport Competition 	1:1 Class 	Group Class 	Table Tennis 	Zumba Class 	Group Class 	Cebu Safari 

### 3<sup>rd</sup> WEEK

SUN	MON	TUE	WED	THU	FRI	SAT
Hygiene Check 	1:1 Class 	Group Class 	Music Class 	Sport Class 	Group Class 	Oslob Island 

### 4<sup>th</sup> WEEK

SUN	MON	TUE	WED	THU	FRI	SAT
Shopping 	Speech Training 	Group Class 	1:1 Class 	Group Class 	Graduation Ceremony 	Go Home 

**\*Note:** The date might be adjusted due to flight schedule.

05

# HLA TUITION FEE TABLE 2024

## A. HAPPY LEARNING ACADEMY TUITION FEE 2024

Unit: Us Dollar

COURSE	Room Type	Dormitory Fee	Tuition Fee	4 weeks	8 weeks	12 weeks	16 weeks	20 weeks	24 weeks
LIGHT GENERAL ENGLISH	Single	1,300	800	2,100	4,200	6,300	8,400	10,500	12,600
	Single/ Deluxe Double	1,100		1,900	3,800	5,700	7,600	9,500	11,400
	Double	950		1,750	3,500	5,250	7,000	8,750	10,500
	Triple	800		1,600	3,200	4,800	6,400	8,000	9,600
	Deluxe Quad/Family	900		1,700	3,400	5,100	6,800	8,500	10,200
	Quad	700		1,500	3,000	4,500	6,000	7,500	9,000
GENERAL ENGLISH	Single	1,300	900	2,200	4,400	6,600	8,800	11,000	13,200
	Single/ Deluxe Double	1,100		2,000	4,000	6,000	8,000	10,000	12,000
	Double	950		1,850	3,700	5,550	7,400	9,250	11,100
	Triple	800		1,700	3,400	5,100	6,800	8,500	10,200
	Deluxe Quad/Family	900		1,800	3,600	5,400	7,200	9,000	10,800
	Quad	700		1,600	3,200	4,800	6,400	8,000	9,600
CAREERS ENGLISH • IT • AVIATION • BUSINESS • MEDICAL • POLICE	Single	1,300	950	2,250	4,500	6,750	9,000	11,250	13,500
	Single/ Deluxe Double	1,100		2,050	4,100	6,150	8,200	10,250	12,300
	Double	950		1,900	3,800	5,700	7,600	9,500	11,400
	Triple	800		1,750	3,500	5,250	7,000	8,750	10,500
	Deluxe Quad/Family	900		1,850	3,700	5,550	7,400	9,250	11,100
	Quad	700		1,650	3,300	4,950	6,600	8,250	9,900
• IELTS • TOEIC	Single	1,300	1,020	2,320	4,640	6,960	9,280	11,600	13,920
	Single/ Deluxe Double	1,100		2,120	4,240	6,360	8,480	10,600	12,720
	Double	950		1,970	3,940	5,910	7,880	9,850	11,820
	Triple	800		1,820	3,640	5,460	7,280	9,100	10,920
	Deluxe Quad/Family	900		1,920	3,840	5,760	7,680	9,600	11,520
	Quad	700		1,720	3,440	5,160	6,880	8,600	10,320
FAMILY PROGRAM	2 pax with Double room		1,000	3,900	7,800	11,700	<b>NOTE:</b> Children below 15 years old - 3 one to one classes, 3 group classes, 1 music or essay writing - Enrollment, Local and Activities fees are not included. - Additional 100USD per 4 weeks with IELTS course		
	3 pax with Triple room			5,400	10,800	16,200			
	4 pax with Quad room			6,800	13,600	20,400			
	5 pax with Master room			8,250	16,500	24,750			

👉 Enrollment Fee: 100\$.

\* Students aged 16+ to 18 will be charged 100 USD/ 4 weeks for minor care charge (Pay at school).

# HLA TUITION FEE TABLE 2024

## B. ESTIMATED LOCAL PAYMENTS

Unit: Philippine Peso

			4 weeks	8 weeks	12 weeks	16 weeks	20 weeks	24 weeks
Visa	x	x	none	4,130	9,530	12,960	16,390	19,820
SSP	6,800	Valid for 6 months	6,800	6,800	6,800	6,800	6,800	6,800
I-CARD	3,500	Stay more than 59 days"	none	none	3,500	3,500	3,500	3,500
Water Fee	1,000	4 weeks	1,000	2,000	3,000	4,000	5,000	6,000
Picture & Student ID	300	1 time	300	300	300	300	300	300
Deposite	2,000	Refundable	2,000	2,000	2,000	2,000	2,000	2,000
Service Charge	3,000	4 weeks	3,000	6,000	9,000	12,000	15,000	18,000
Books (7 books)	x	x	3,000	3,000	3,000	3,000	3,000	3,000
<b>TOTAL</b>			<b>16,100</b>	<b>24,230</b>	<b>37,130</b>	<b>44,560</b>	<b>51,990</b>	<b>59,420</b>

\* Additional books depend on the price.

\* Local Payments (not including the electricity fee) can be changed immediately depending on the government announcement.

## C. ELECTRICITY FEES

Unit: Philippine Peso

ROOM TYPE	Quad Room	Deluxe Quad/ Family/ Triple Room	Double Room	Deluxe Double Room	Single
Electricity Fee	2,000	3,000	4,000	4,500	5,000

\* Electricity costs will be calculated based on the type of room that the student registers per 4 weeks. Over using will be charged 19 PHP/kWh.

## D. OTHER VISA FEES

Unit: Philippine Peso

Our visa extension fee regulation for Hongkonger, Chinese and Taiwanese who need to extend their visa as follows:

PERIOD	1st - 7 days	2nd - 29 days	3rd - 30 days
Extension Fee	4,130	4,130	8,640 (including I-CARD)

\* For Taiwanese with 30 days E-VISA | 59 days VISA, the first extension is 5,140PHP and I-CARD 3,500PHP.

## E. ADDITIONAL CHARGES

Unit: Philippine Peso

Students are required to notify in advance if they plan to stay at the school or if they want to travel after checking out. The cost of staying includes meals, which are priced at:

ROOM TYPE	Triple/Quad Room	Deluxe Quad/ Double/Family Room	Deluxe Double Room	Single Room
Person/Night	1,500	2,000	2,500	3,000

\* Students are responsible for keeping track of their visa expiration dates and paying the visa extension fees (if applicable).



# 06

## SERVICES & UTILITIES

HLA strives to provide a variety of services and amenities at the school in order for learners to focus on their studies while also appreciating their time in the Philippines.

### HLA SUPPORTING STAFF

Staff that serves a vital role at HLA monitors maintains, and repairs dormitory equipment regularly and when students require assistance. Filipino staff in the school to guide and help students whenever they need assistance.

01



### 24/24 SECURITY

Safety is one of the top priorities of HLA for the student's and staff, thus 24/24 security is provided by the school.

02



### AIRPORT PICK UP

HLA will connect with students and pick them up for free at the airport, provided that students provide information about a 2-week advance flight for school. It reduces sensation anxiety and stress for students before flying. Pick up students according to the school's schedule with trusted staff in charge.

03



### SELF-COOKING AREA

HLA has developed a place where students may cook home-flavored meals to introduce to friends from other countries or want to gather without going far. However, students must register first with the staff in charge to be listed and assisted when needed.

04



### LAUNDRY AND CLEANING

Students' clothes are washed free of charge by HLA staff. The school also provides washing machines for students to use independently, and staff will be available to assist students in drying their clothes. Students' rooms are cleaned according to the school's weekly schedule. However, students are encouraged to observe common cleanliness, especially those in shared dormitories.

05



# 06

## SERVICES & UTILITIES

### H-MART

H-Mart is a convenience store inside the campus selling essential products such as shampoo, shower gel, snacks, and more. Students can also find their favorite snacks: dried mango, shrimp noodles, chocolate, and more. Students can enjoy the variety of snacks and beverages that our H-Mart can offer.

06



### H-CARE 24/7

A support system wherein a crew of staff is operating diligently 24/7 inside the school to help students with all of their needs such as damage in the room, going to the hospital, assisting in receiving parcels and the like.

07



### H-CAFÉ

With the academy's natural advantage, HLA-Cafe has designed an alfresco cafe where students can buy popular drinks such as coffee, smoothies, juices, ice cream, and more.

08



### H-SPORT

HLA is a large campus with several integrated facilities: swimming pool, basketball court, outdoor gym area, and mini golf where students can relax mentally and physically. Students' are free to utilize the facilities as long as they comply with each facility's guidelines.

09



### BORROWING BICYCLES

HLA provides free bicycles for students who want to ride or do exercise after studying time. It helps students to strengthen their health during studying in HLA. Students must register with HLA guard if they want to borrow bicycles and return them after using.

10





# 07

## IMPORTANT CONSIDERATIONS



### 01

#### AIRLINE SELECTION

Currently, there is no direct flight from Vietnam to Cebu, students need to transit in Manila and take a connecting flight to Cebu, both routes do not exceed 5 hours air travel. Students are free to select their airline as there are several airlines available, including Cebu Pacific, Philippine Airlines, Airasia, EVA, Scoot, and TigerAir; Cebu Pacific and Philippine Airlines offer various routes to Cebu with flexible time frames.

### 02

#### INTERNATIONAL INSURANCE

International insurance costs 35-55 USD/ month, but the benefits of medical treatment abroad are quite high. Depending on the country, the price of insurance is also different. In the case of medical intervention, students will avoid financial pressures because the medical costs in the Philippines for foreigners are very expensive.

### 03

#### WHAT DAY SHOULD STUDENTS COME TO SCHOOL?

HLA's courses all begin on Monday and end on Friday, hence it is most reasonable for students to plan their schedules and travel tickets to come on Sunday and leave on Saturday, since this does not affect the amount of visa extension days (if any).

### 04

#### PHP CURRENCY - PESO

The Philippine's currency is the peso (PHP). Students should not be concerned since, being a tourist location, commercial establishments can easily convert foreign cash. The current exchange rate might be different depending on time.

### 05

#### CULTURE AND RELIGION

Having been a Spanish and American colony for a long time, the culture of the Philippines has the intersection of East and West. Cebu in particular is considered an important cultural center of the Philippines, imprinted with Spanish and Roman Catholic imprints. More than 85% of people are Catholic Protestantism and Protestantism, about 15% are Muslim. You can visit, admire a lot of churches in Cebu with hundreds of years of history and unique ancient architecture.

### 06

#### CUISINE

The Philippines is located in Southeast Asia, so rice is the main staple food of the country. Most of the food is processed with heavy fats which reduces the sweet side that makes it difficult for vegetarians and those who follow a special diet (Eat clean, Low Carb...) Furthermore, Cebuano food is diversified if you enjoy local cuisine and are not afraid to try new dishes. Try the greatest Cebuano foods, such as lechon (roasted pig), sisig (made from head meat, ears, and pig's tongue), and sinigang (seafood sour soup). There are also a wide array of international restaurants in the streets for you to choose from (Korean, Japanese and Western cuisines).



**07****PACKING**

- Documents: Passport valid for more than 6 months | Admission Letter | Tuition notice letter
- Save in phone: Roundtrip airfare | Philippine Medical Declaration English - Vietnamese Dictionary | Covid-19 vaccination confirmation.
- Clothing: Since the temperature in the Philippines is hot all year, please dress in cool, comfortable, and absorbent clothing. If you are prone to being cold from the air conditioners, bring a jacket to wear on the plane or in the classroom. HLA encourages students to bring swimwear and take advantage of the marine activities available in Cebu, such as surfing, scuba diving to see corals, waterfall jumping, and so on. This is an experience you will just not experience elsewhere.
- Medicine: Bring specific medications if you have a chronic illness, such as a couple common medicines for fever, stomachache, headache, and diarrhea. Given that in the Philippines, you must have a doctor's prescription if you wish to buy medicines.
- Others: hats, brushes, toothpaste, shower gel, shampoo (if luggage is limited in weight, you can buy at the school convenience store); towels, water bottles, pens, notebooks (1-2 books).

**09****INTERNET IN THE PHILIPPINES**

The internet speed in the Philippines is poor, and the cost is not cheap. HLA has a wifi system however, when lots of people access it so the connectivity will be limited. Consequently, only a few places in the Philippines have wifi; students can opt to buy a SIM card from Globe or Smart and load the card. Students are advised to register for internet service packages that are faster than wifi and more convenient. A one (1) month subscription ranges from Php 400 or more depending on the students' needs.

**11****TIME ZONE DIFFERENCE: GMT+8**

Vietnam and the Philippines are one hour ahead of each other; if it is 9 a.m. in Vietnam, it is 10 a.m. in the Philippines. This difference does not really affect students' biological clocks too much, helping them quickly adapt to learning and activities at school.

**08****TRANSPORTATION**

- Jeepney: Jeepney is the most common mode of transportation in the island. This brightly decorated vehicle became the symbol of the Philippines. You can catch a jeepney at a cheap fare (from Php 8.00-20.00) for short trips. This is a convenient means of transportation that is worth experiencing. Moreover, when traveling by public transport, you should always pay attention with your bags and personal belongings.
- Tricycle: This is a type of three-wheeled motorbike that is specifically built to transport baggage or passengers. A tricycle can transport 5-6 persons for 10-20 pesos per leg. Like the TukTuk automobile that people in Thailand still hear while walking around the corner.
- Buses: Buses are becoming increasingly popular for long-distance travel in the Philippines. There is air conditioning and numerous routes that operate constantly, making this a cost-effective (45 to 80 pesos) and student-friendly choice.
- Taxi: There are two types of taxis: yellow and white. Yellow cabs have higher fees and are less popular. White cabs start at 40 pesos, while yellow taxis start at 70 pesos. Apart from that, always ride with a meter and pay attention if there is an anomaly.

**10****CLIMATE IN CEBU: RANGES FROM 24 TO 34°C**

Cebu experiences high temperatures all year round. The rainy season lasts from 6-12 months. The dry season lasts from January-May. Dubbed as the Southern Queen of the Philippines, Cebu is less affected by tropical storms with relatively stable weather. During the rainy season, the temperature and air are somewhat more sultry due to the rains falling quickly with intensity, then the sun reappears. In the dry season the temperature drops 2-3 degrees below the average temperature, there will still be rain but not much.

**12****LANGUAGE**

English is the Philippines' second language, and it is utilized in their educational system, institutions, government, and media, which helps the country sustain its use. This country has about 170 different dialects, with Tagalog and Cebuano being the most generally spoken in casual communication. Both Filipino and English are used in formal situations and education.

1. It is strictly forbidden to use and carry alcoholic beverages, banned substances (drugs, ecstasy ...), weapons (knives, guns, swords ...), incendiary substances, or any dangerous items entering the school.
2. Theft, vandalism, racism, color, religion, and violence are strictly prohibited.
3. Respect differences in each student's personal life, do not ask questions, and participate in discussions about other students' sensitive issues.
4. Do not record, photograph, or film a student without his or her consent
5. All acts and words to harass other students are strictly prohibited
6. Borrowing money between students, teachers, and HLA staff is strictly forbidden.
7. If students lose their room or locker keys, please immediately notify H-Care staff to receive a new one. Students must pay 500 pesos for the provision of new keys.
8. Students are not allowed to bring relatives, friends, or guests inside the campus without the school's consent.
9. Students cannot bring items in the cafeteria, H-mart (spoons, forks, spoons, bowls...) out of this area.
10. Smoke cigarettes (including e-cigarettes and vapes) in the right places. Cases of smoking outside the prescribed area, if detected by the school, will be fined 2,000 pesos for each violation.
11. Students are responsible for self-preservation and are responsible for their personal belongings.
12. Students are not allowed to leave the school during class (7:45 – 17:30) except in emergencies or for a good reason (visa interview, hospital visit...)
13. The school curfew is 00:00 AM. Students who stay out overnight can only return to school at 6:00 A.M.
14. Students are allowed to leave the school after school if they complete a vocabulary test every morning and must return to school before the 00:00 A.M curfew.
15. Climbing school gates, fences, balconies, roofs or other dangerous acts is strictly prohibited.
16. HLA staffs, management, and security guards will regularly inspect to ensure the safety of all areas at the school. When a violation is encountered, school staffs have the right to take photos/videos/recordings as evidence.
17. The school has cameras installed in many areas of campus. Students cannot check surveillance cameras without permission from the school.
18. It is strictly forbidden to have sex in the school (except when students register to share a double room before enrollment)
19. Students must complete a travel notification form and sign an undertaking to take responsibility for off-campus incidents.

20. The HLA School reserves the right to expel students for serious violations and not to refund fees. After receiving the expulsion decision, students must leave the school within 24 hours.

21. Students must comply with the laws of the Philippines while studying at the school.



1. Acts against regulations and school staff.
2. Spreading false rumors that affects the school's reputation; There are slanderous, fabricated words enticing other students to participate in protests against the school.
3. Deliberately destroying HLA's property and that of other students, committing any acts that affect other staff and trainees.
4. Quarrelling, fighting, or engaging in any acts of mental or physical violence against HLA staff, teachers and students.
5. Organizing, participating in betting and gambling in any form.
6. Using of prohibited substances on school premises.
7. Sexual acts in school (except when students register for couple room -double room before enrollment)
8. Violated the school rules many times.

## 03

REGULATIONS FOR  
REGISTERING, REFUNDING AND  
CANCELING COURSE

1. Students are allowed to change classes only if they can provide valid justification.
2. Students who've already changed classes are unable to return to their previous classrooms or teachers.
3. If students wish to change classes, students must inform the staff in charge and be placed on a waiting list; the new class schedule will be announced and effective as of Monday of the following week.

**\*IN CASE OF CANCELLATION OF THE COURSE BEFORE ADMISSION:**

- 4 weeks before admission date: Full tuition and dormitory fees, except registration fee.
- 3 weeks before admission date: 90% refund of tuition and dormitory fees, except registration fee.
- 2 weeks before admission date: 80% refund of tuition and dormitory fees, except registration fee.

**\*IN CASE OF CANCELLATION OF THE COURSE AFTER ADMISSION:**

- When students have completed 25% of the total course: 60% refund of tuition and dormitory fees.
- When students have completed 26% to 50% of the course: Refund 50% of tuition and dormitory fees.
- When students have completed 51% of the course: Tuition and dormitory fees are non-refundable.

**\*NOTE:** HLA refunds the remaining course tuition fee based on units divisible by 4.

- Students who register for 4 weeks will not refund tuition fees after admission.
- Local fees are 100% refundable based on the time the student leaves the school.
- Students who change courses after admission will not refund the difference between 2 courses.

## 04

REGULATIONS FOR  
CLASS CHANGE

1. Students can only change classes when they give a good reason. For delicate reasons, students can share with management.
2. When deciding to change classes, students cannot return to their old class or teacher.
3. If students want to change classes, they need to notify the staff in charge to be on the waiting list, and the new class schedule will be notified and effective from now on from Monday of the following week.

## 05

## WAIVER OF LIABILITY

1. HLA waives liability for objective events beyond its control, such as natural disasters, epidemics, wars, terrorism, government orders, disasters, flight delays/cancellations, and lost luggage.
2. Students are asked to report to HLA if they have health conditions, including mental and physical problems. HLA waives liability or circumstances that occur to the student's health and affect the health of other students in the process. The curriculum could be cancelled due to the student failing to declare his health condition properly.
3. The protection of money and personal property is the responsibility of students. HLA will not be liable for loss or damage to personal property.
4. HLA waives liability for all cases of staying in the Philippines after graduation or expulsion from school.

## 06

REGULATIONS FOR  
ATTENDANCE & PUNCTUALITY

1. Students must participate fully in all classes and tests during the course. Otherwise, depending on the extent, the school will consider the suspension and not award the certificate to students.
2. Please notify the managers or caseworkers if students want to take a leave of absence by filling out a leave form or texting the caseworker (Full name, room number, and reason). If the student is 10 minutes late for the lesson, the class will be canceled without any extra classes or refunds. If students want to be late for class, please notify the academic department or school administration so that classes can continue.
3. If students are late for the classes 03 times, it will be considered for 01 absence.
4. Students absent from 20% or more of the total course sessions will not receive a certificate of completion from the school.
5. Students absent from 50% or more will be expelled, and no refunds will be given.
6. Attendance will be waived for students who need to isolate because of infectious diseases (no make-up class).

## 07

REGULATIONS FOR SCHOOL  
LIVING AND DORMITORY

1. Students stay in the correct room as prescribed and cannot change rooms arbitrarily without the school's consent.
2. Students are strictly forbidden to enter other practitioners' rooms, regardless of same-sex or opposite-sex friends' rooms.
3. Cooking activities are strictly prohibited in the dormitory area. If there is any short-circuit, fire or overuse, students will be fully responsible to the school.
4. Students are not allowed to arbitrarily repair, change or move furniture and equipment in the dormitory room.
5. Students comply with the policy "Using goes hand in hand with preserving and protecting school facilities". The school prohibits destructive acts such as nailing nails to walls, painting, sticking duct tape or any indelible adhesive on the wall. All damages and losses must be compensated according to the school's regulations.
6. Always pay attention to general hygiene and personal hygiene (Always pay attention to general and personal hygiene (body odour, food odour,...))
7. Do not arbitrarily use other people's things.
8. Students are not allowed to use equipment or devices that make loud noises in the dormitory area.
9. Students keep order after 11:00 P.M. After 00:00 A.M., students do not leave the room except in cases of emergency, such as going to the hospital or announcing a fire or explosion....
10. In addition to electrical appliances in the room, it is strictly forbidden for students to bring into the room and use other electrical appliances (rice cookers, electric stoves...) without consent from the management. Students will be responsible for incidents such as electrical shorts, fires, and expenses when using excess electricity.
11. Please notify the School Managers immediately if students suspect or show signs of infectious diseases such as COVID-19, chickenpox, measles ... to be safely quarantined. Students must follow the school's arrangements to prevent disease and heal effectively.



# 08

## HLA DORMITORY

# SINGLE ROOM

**CAPACITY** 01 person

Note: This single room can be used as a couple room for 2 persons.

### DESCRIBE

The room includes:



01 king bed



01 closet



01 desk



01 toilet  
01 bathroom



Suitable for  
one person or  
a couple

# 08

## HLA DORMITORY

# DOUBLE ROOM

**CAPACITY** 02 persons

### DESCRIBE

The room includes:



02 single beds



02 closets



01 big desk for  
02 persons



01 toilet  
01 bathroom



**Suitable for  
two persons**

# 08

## HLA DORMITORY

# DELUXE DOUBLE

**CAPACITY** 02 persons

The master room includes 02 single rooms and 01 shared toilet/ bathroom.

### DESCRIBE

Each room includes



01 single bed



01 closet



01 desk



Suitable for  
two persons



# 08

## HLA DORMITORY

# TRIPLE ROOM

**CAPACITY** 03 persons

### DESCRIBE

The room includes:



03 single beds



03 closets



01 big desk for  
03 persons



01 toilet  
01 bathroom



Suitable for  
three persons

# 08

## HLA DORMITORY

# QUAD ROOM

**CAPACITY** 04 persons

### DESCRIBE

The room includes



02 bunk beds



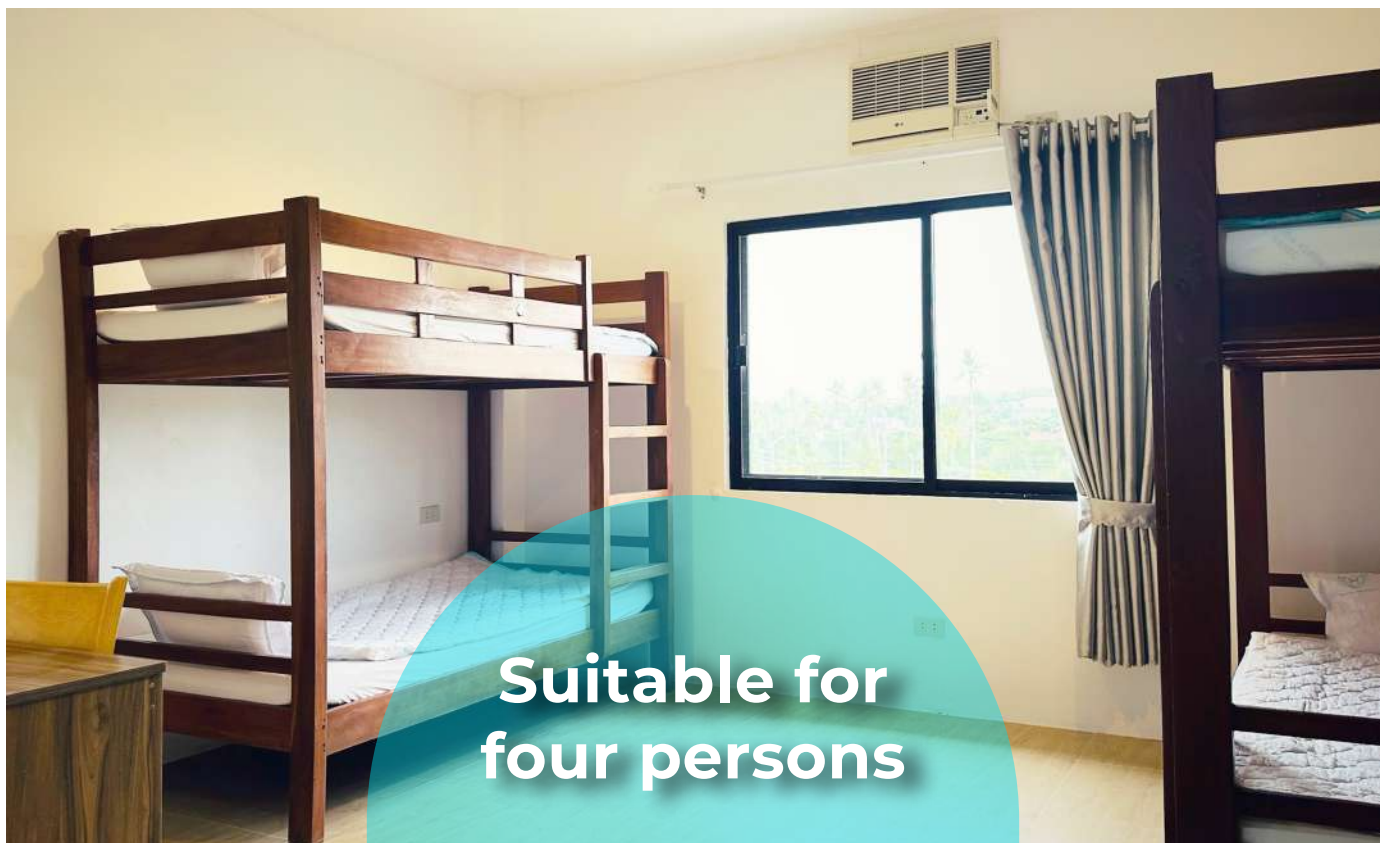
04 closets



02 big desks for  
04 persons



01 toilet  
01 bathroom



# 08

## HLA DORMITORY

# DELUXE QUAD

**CAPACITY** 04 persons

The master room includes 02 double rooms and 01 shared toilet/ bathroom.

### DESCRIBE

Each room includes



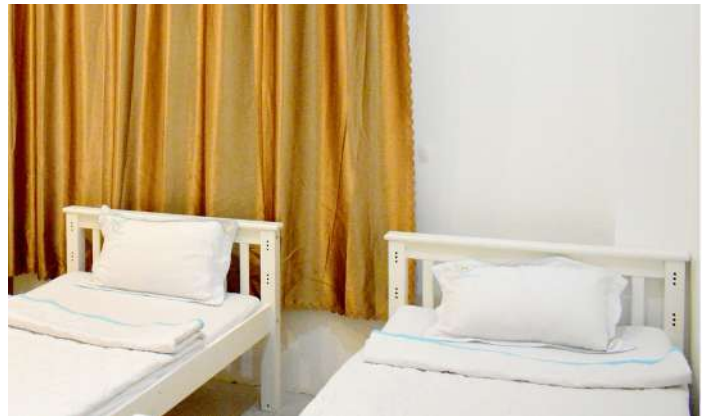
02 single beds



02 closets



01 big desk  
for 02 persons



Suitable for  
four persons

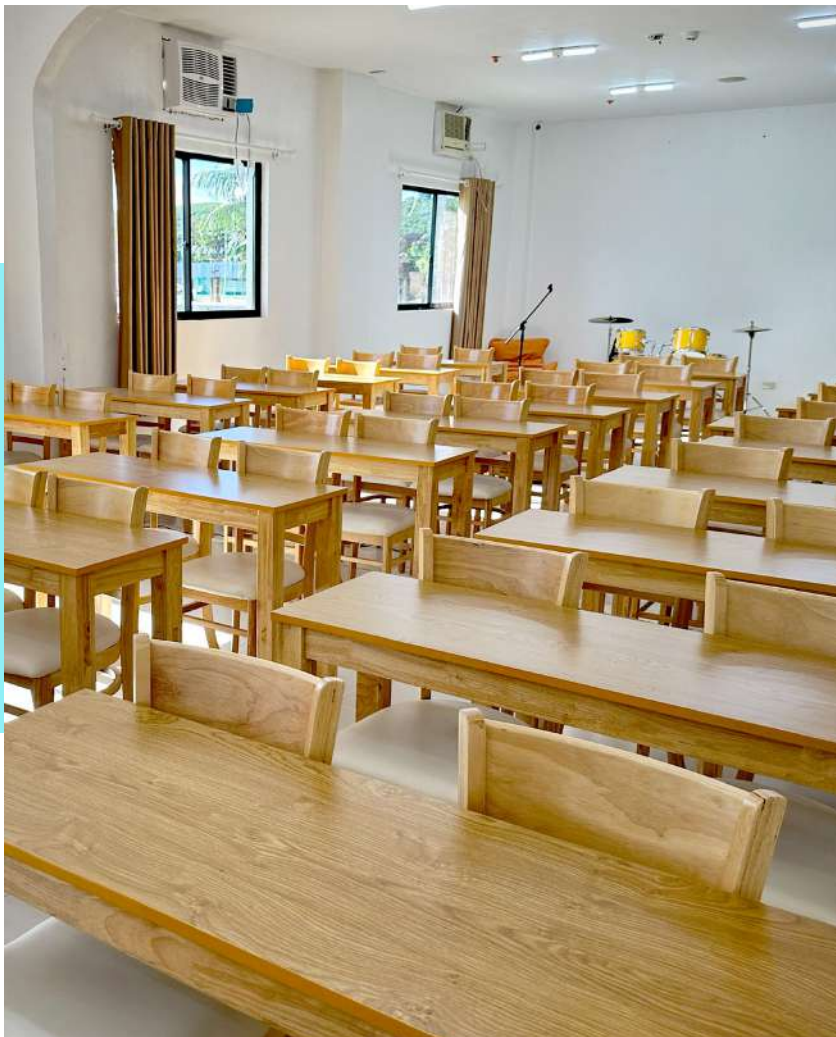


09

## HLA FACILITIES



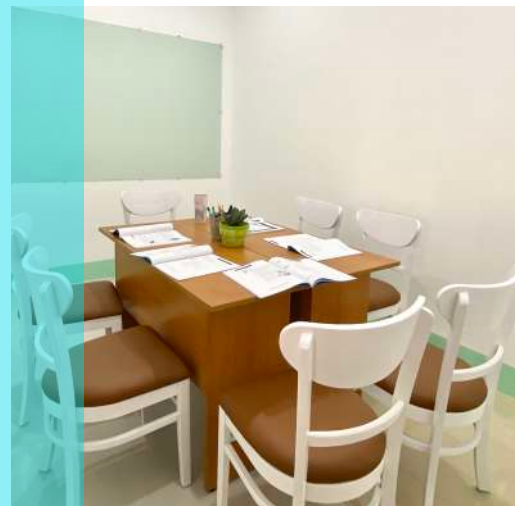
# 09 HLA FACILITIES





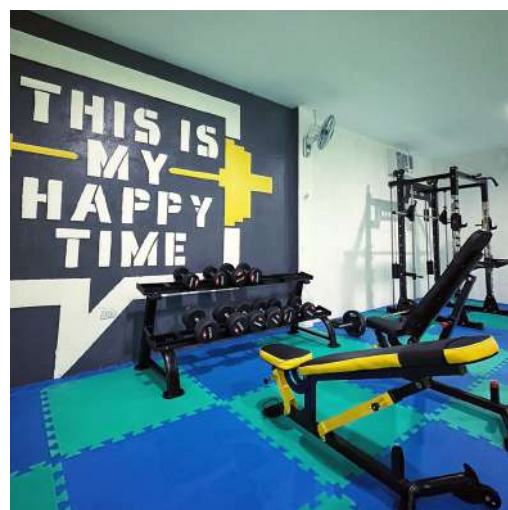
09

# HLA FACILITIES





# 09 HLA FACILITIES





09

# HLA FACILITIES





10

# HLA STUDENT





10

# HLA STUDENT





# 10 HLA STUDENT







# PHILIPPINES

## HOLIDAY 2024

January						
S	M	T	W	T	F	S
	1	2	3	4	5	6
7	8	9	10	11	12	13
14	15	16	17	18	19	20
21	22	23	24	25	26	27
28	29	30	31			

February						
S	M	T	W	T	F	S
				1	2	3
4	5	6	7	8	9	10
11	12	13	14	15	16	17
18	19	20	21	22	23	24
25	26	27	28	29		

March						
S	M	T	W	T	F	S
					1	2
3	4	5	6	7	8	9
10	11	12	13	14	15	16
17	18	19	20	21	22	23
24	25	26	27	28	29	30
31						

April						
S	M	T	W	T	F	S
	1	2	3	4	5	6
7	8	9	10	11	12	13
14	15	16	17	18	19	20
21	22	23	24	25	26	27
28	29	30				

May						
S	M	T	W	T	F	S
			1	2	3	4
5	6	7	8	9	10	11
12	13	14	15	16	17	18
19	20	21	22	23	24	25
26	27	28	29	30	31	

June						
S	M	T	W	T	F	S
						1
2	3	4	5	6	7	8
9	10	11	12	13	14	15
16	17	18	19	20	21	22
23	24	25	26	27	28	29
30						

July						
S	M	T	W	T	F	S
	1	2	3	4	5	6
7	8	9	10	11	12	13
14	15	16	17	18	19	20
21	22	23	24	25	26	27
28	29	30	31			

August						
S	M	T	W	T	F	S
				1	2	3
4	5	6	7	8	9	10
11	12	13	14	15	16	17
18	19	20	21	22	23	24
25	26	27	28	29	30	31

September						
S	M	T	W	T	F	S
1	2	3	4	5	6	7
8	9	10	11	12	13	14
15	16	17	18	19	20	21
22	23	24	25	26	27	28
29	30					

October						
S	M	T	W	T	F	S
		1	2	3	4	5
6	7	8	9	10	11	12
13	14	15	16	17	18	19
20	21	22	23	24	25	26
27	28	29	30	31		

November						
S	M	T	W	T	F	S
					1	2
3	4	5	6	7	8	9
10	11	12	13	14	15	16
17	18	19	20	21	22	23
24	25	26	27	28	29	30

December						
S	M	T	W	T	F	S
1	2	3	4	5	6	7
8	9	10	11	12	13	14
15	16	17	18	19	20	21
22	23	24	25	26	27	28
29	30	31				

JAN	Jan 1	New Year's Day
FEB	Feb 10	Chinese New Year
	Feb 25	EDSA Revolution Anniversary
MAR	Mar 28	Maundy Thursday
	Mar 29	Good Friday
	Mar 30	Easter Saturday
	Mar 31	Easter Sunday

APR	Apr 9	Day of Valor
	Apr 10	End of Ramadan (Eid al-Fitr)
MAY	May 1	Labour Day
JUN	Jun 12	Independence Day
	Jun 16	Feast of the Sacrifice (Eid al Adha)
AUG	Aug 21	Ninoy Aquino Day
	Aug 26	National Heroes' Day

NOV	Nov 1	All Saints' Day
	Nov 30	Bonifacio Day
DEC	Dec 8	Feast of the Immaculate Conception of the Blessed Virgin Mary
	Dec 24	Christmas Eve
	Dec 25	Christmas Day
	Dec 30	Rizal Day
	Dec 31	New Year's Eve

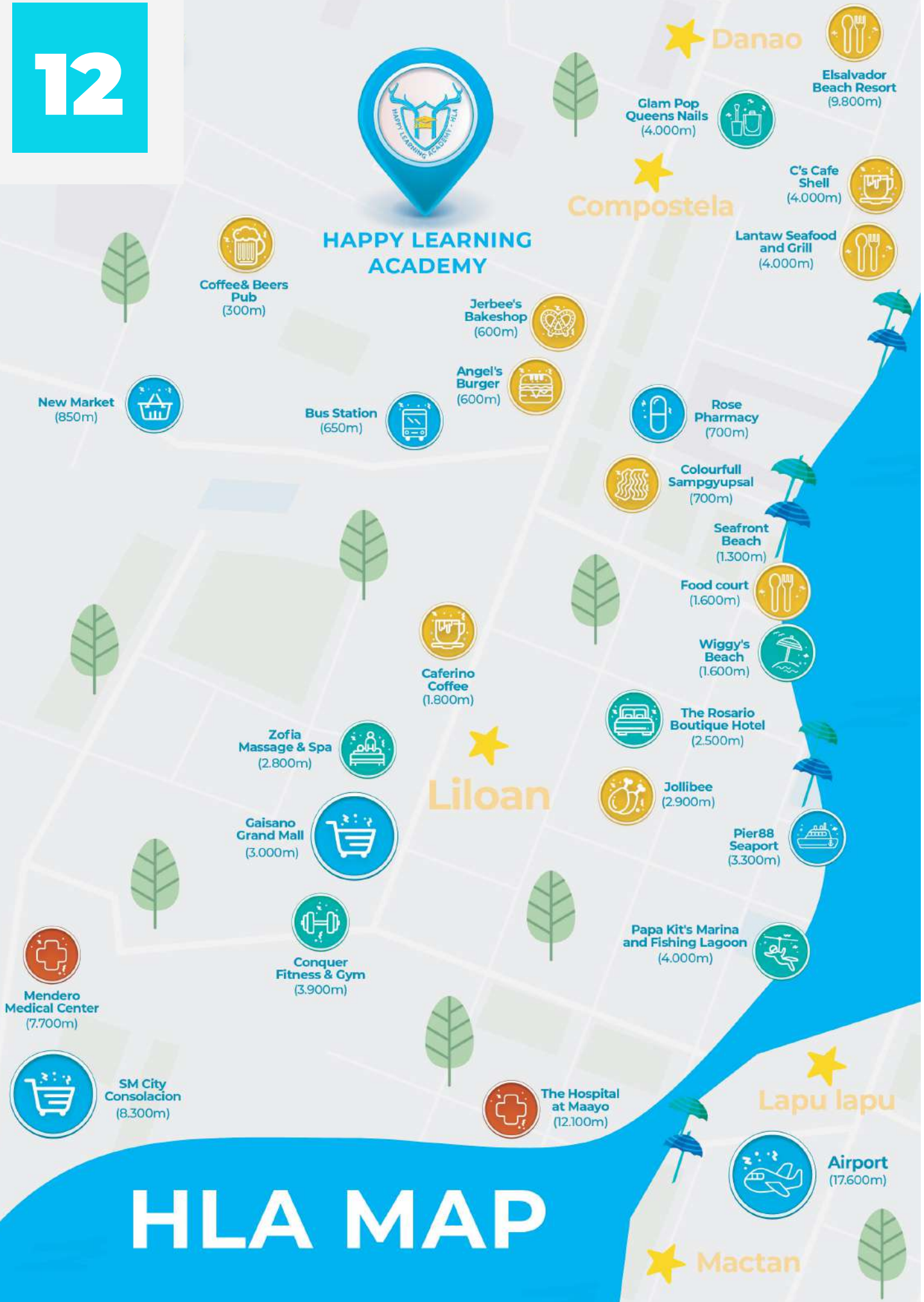
### Note:

1. School holidays and public holidays will follow the Philippine government's public holiday schedule.
2. On these days there will be no classes and there will be no compensatory classes.



12

## HAPPY LEARNING ACADEMY



# HLA MAP



# HLA BROCHURE 2024

